

Anti cMyc Monoclonal Antibody

| | | |
|-------------------------------|---|---|
| Catalog No. | ■ | LT0421, 50ug, lyophilized with PBS, pH7.4 |
| Description | ■ | Anti-Myc Tag (Myc.A7) Monoclonal Antibody |
| Clonality | ■ | Myc.A7 |
| Host Species Isotype | ■ | Mouse IgG1 |
| Immunogen | ■ | EQKLISEEDL (Myc) synthetic peptide conjugated to KLH |
| Specificity | ■ | Recognizes the N-terminal or C-terminal Myc-tagged fusion proteins |
| Sensitivity | ■ | WB (with ECL): 10-50ng of Myc-tagged fusion proteins |
| Purification | ■ | Protein A affinity chromatography from mouse ascites fluid |
| Application | ■ | Dot, ELISA, IP, IS, WB |
| Working Condition | ■ | WB (with ECL): 1:1000-3000 dilutions (incubate for 1 hour at room temperature) IS: 1:500-2000 dilution. For best results with other assays (e.g.: Dot, ELISA, etc), please determine optimal working dilution by titration test. Reconstitute the lyophilized antibody with deionized water (or equivalent) to a final concentration of 50ug/50ul. |
| Storage | ■ | Store at -20°C for up to 2 years. Centrifuge after first thaw to maximize product recovery. Aliquot to avoid repeated freeze-thaw cycles. Store aliquots at 4°C for 1-2 weeks |

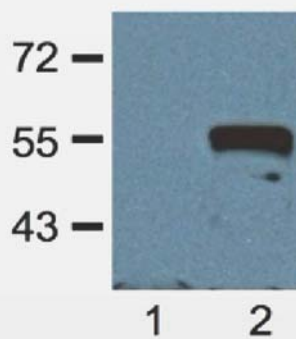


Fig. 1:1000 (1µg/mL) Ab dilution probed against HEK293 cells transfected with Myc-tagged protein vector; untransfected (1) and transfected (2)