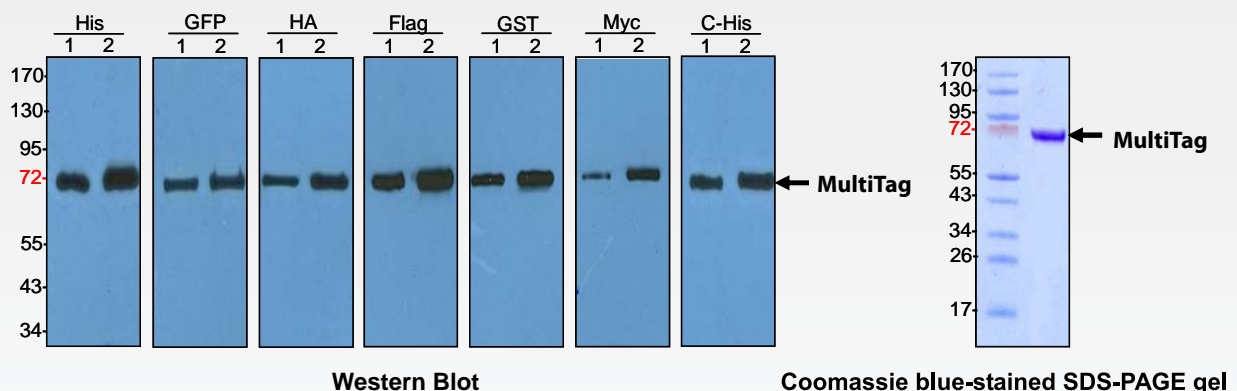


Understanding **Life**
One **Protein** at a Time ...

MultiTag™ : Multiple-Epitope Tagging Loading Control Protein

- Never fail at Western Blot. You control the Western results.
- See positive results for every run. Use only 50 ng proteins.
- Save time and resource for all your protein research.

MultiTag Amino Acid Sequence:

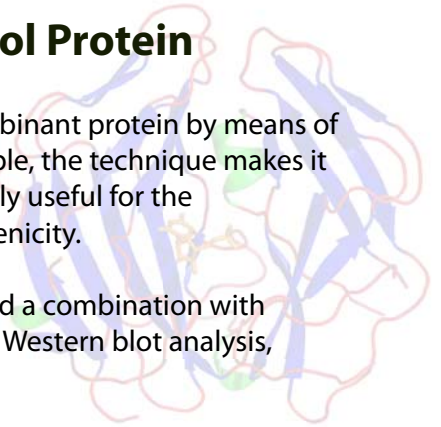


Lane1: MultiTag Protein 50 ng
 Lane2: MultiTag Protein 100 ng
 Primary antibody: His: 6xHis Monoclonal Antibody Albumin Free (Clontech) 1:5000
 GFP: Monoclonal Anti-GFP antibody produced in mouse (Sigma) 1:1000
 HA : Anti-HA (LifeTein) 1:500
 Flag: Anti-Flag (LifeTein) 1:5000
 GST: Anti-GST (LifeTein) 1:500
 Myc: Anti-Myc (LifeTein) 1:1000
 C-His: C-terminal 6xHis Antibody (LifeTein) 1:400
 Secondary antibody: Goat anti Mouse IgG-HRP (Santa Cruz) 1:5000
 Detection: ECL

Multiple-Epitope Tagging Loading Control Protein

Epitope tagging is a technique in which a known epitope is fused to a recombinant protein by means of genetic engineering. By choosing an epitope for which an antibody is available, the technique makes it possible to detect proteins for which no antibody is available. This is especially useful for the characterization of newly discovered proteins and proteins of low immunogenicity.

By selection of the appropriate epitope and antibody pair, it is possible to find a combination with properties that are suitable for the desired experimental application, such as Western blot analysis, immunoprecipitation, immunochemistry, and affinity purification.

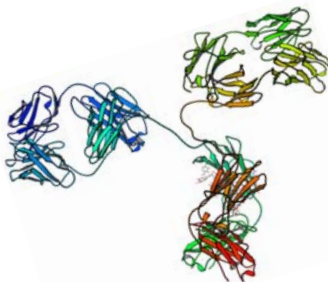


| Protein Name | Applications | LifeTein Cat. No. | Package Size | Price |
|--------------|--------------|-------------------|--------------|-------|
| MultiTag | WB, IP | LT0425 | 50 uL | \$30 |

MultiTag Protein

| | |
|-------------------------|--|
| Catalog Number | LT0425 |
| Molecular Weight | 74kDa |
| Description | Recombinant protein containing multiple tags including His, GFP, HA, Flag, GST and Myc |
| Applications | Western Blot, Immunoprecipitation |
| Buffer | SDS loading buffer (50 mM Tris pH6.8, 2% SDS, 10% Glycerol, 0.1% bromophenol blue, 1.5% DTT and 4M Urea) |
| Concentration | 10 ng/uL |
| Package Size | 50 uL |
| Storage/Handling | Protein is recommended being stored at -80°C. Avoid repeated freeze-thaw cycles. |
| Usage | Loading 5 uL/lane is recommended. For research purpose only. |

Related Products:



| Catalog Number | Product Name | Size | Price (US\$) |
|----------------|--------------|-------|--------------|
| LT0420 | Anti-Flag | 50 ug | \$50 |
| LT0421 | Anti-Myc | 50 ug | \$50 |
| LT0422 | Anti-HA | 50 ug | \$50 |
| LT0423 | Anti-GST | 50 ug | \$50 |
| LT0424 | Anti-His | 50 ug | \$50 |