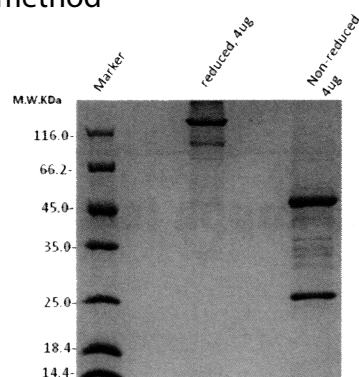


Anti-HEL (Hen Egg Lysozyme) Mouse IgG1 isotype control

Catalog No.	■	LT12035, 1mg, PBS, pH7.4
Description	■	Anti-HEL (Hen Egg Lysozyme) Mouse IgG1 isotype control (whole molecule)
Ig Subclass	■	Mouse IgG1, Kappa
Host Species Isotype	■	Mouse IgG1
Species Reactivity	■	Chicken
Application	■	The anti HEL (Hen Egg Lysozyme) IgG isotype control antibodies were expressed in CHO-S cells and purified with protein A affinity column. The isotype control antibodies can be used as negative controls to differentiate non-specific background signal from your target antibody signals. Whole molecule immunoglobulins may also be used as standard protein or coating protein in ELISA, Western-Blot, immunofluorescence (IF), immunohistochemistry (IHC), immunoprecipitation (IP), and flow cytometry (FACS). This product is also suitable for various in vitro and in vivo studies which require low endotoxin level. LifeTein's isotype control proteins were produced under stringent endotoxin control conditions of <0.5 EU/μg.
Quality Control	■	Endotoxin level: <0.5 EU/mg by the LAL method Purity: >95% by HPLC and SDS-PAGE
Purification Method	■	Protein A affinity column
Concentration	■	1 mg, in 20 mM PBS, pH7.4
Conjugation	■	Unconjugated
Storage	■	Store at -80°C in PBS for up to 2 years. Reconstitute the lyophilized antibody with deionized water (or equivalent) to a final concentration of 1mg/ml. Aliquot to avoid repeated freeze-thaw cycles.



SDS-PAGE Under reducing and non-reducing conditions